

# BNC75 Receptacle Connector for Broadcast

## BNC75 Series for 12G-SDI

DDK Ltd.



Characteristic  
Impedance

75  $\Omega$

Lock Type

Bayonet

### OUTLINE

- ◆ BNC75 series for broadcasting equipment is a high performance 75  $\Omega$  connector which is compliant with the 12G-SDI standard by improving impedance matching of the conventional product.

### APPLICATIONS

Broadcast equipment (Switcher, Professional video camera, Monitor)

### FEATURES

- ◆ Excellent high-frequency characteristics (12G-SDI compliant)
- ◆ Angle type and straight type are available.

### CONNECTOR TYPES

Angle type for PCB (Automatic mounting) : 2 ~ 3 page  
 Angle type for PCB (Manual mounting) : 4 ~ 6 page  
 Straight type for PCB (Manual mounting) : 7 ~ 8 page

© Please acknowledge that the specification etc. of this catalog might change by the improvement etc. without notice.  
 Moreover, the characteristic and the specification of the published product are the reference values.  
 Please confirm the content with the latest delivery specifications when you use the product.

▶ Angle type for PCB (Automatic mounting)



**OUTLINE**

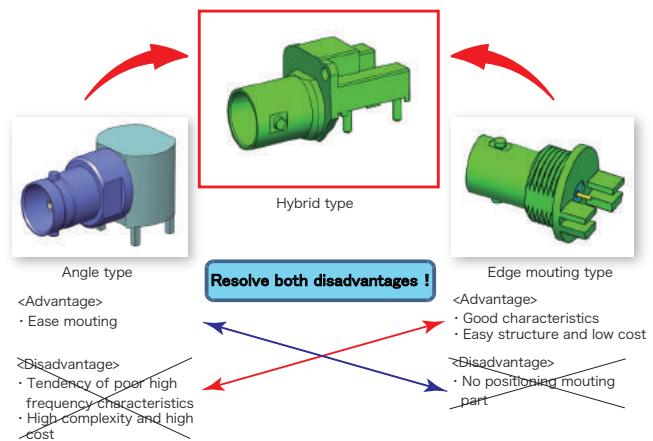
- ◆ Hybrid type utilized advantage of angle type and edge mounting type
- ◆ Excellent high-frequency characteristics in the industry

**APPLICATIONS**

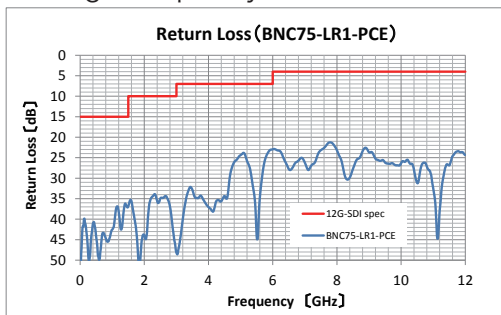
Broadcast equipment (Switcher, Professional video camera, Monitor)

**FEATURES**

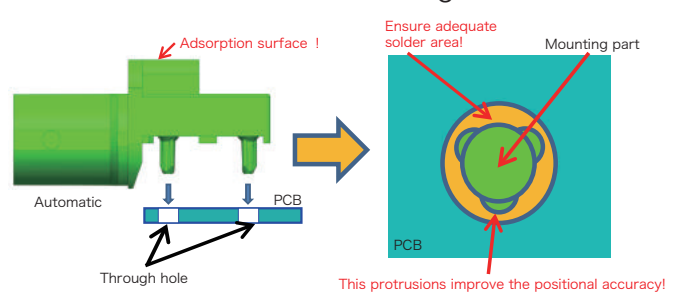
- ◆ Excellent high-frequency characteristics (12G-SDI compliant)
- ◆ The protrusions of the mounting part improve the positional accuracy (Patent pending).
- ◆ Significant weight saving (less than 50% in comparison with our conventional angle type)



【High-frequency characteristic】



【Automatic mounting】



**SPECIFICATIONS**

Characteristic Impedance	75 Ω
Frequency Range	12GHz Max.
Rated Voltage	AC500V(r.m.s.)
Dielectric Withstanding Voltage	AC1,000V(r.m.s.) / 1 minute
Insulation Resistance	1,000M Ω Min. at 500V DC
Return Loss	20dB Min.( ~ 3GHz)
	10dB Min.( ~ 12GHz)
Operating Temperature	-40 ~ +85°C

**Material / Finish**

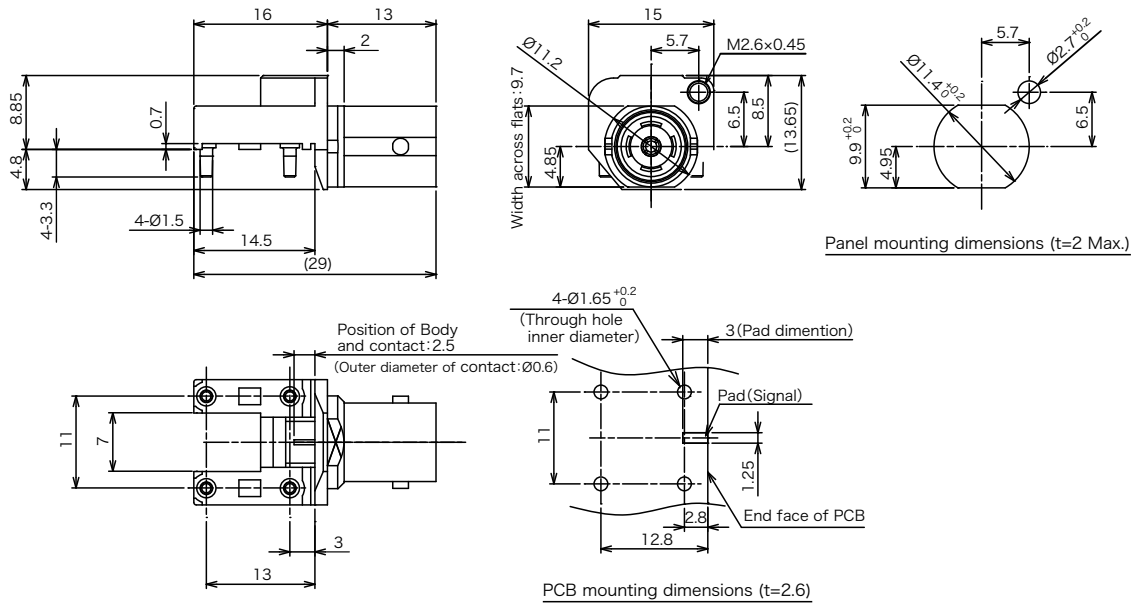
Item	Material / Finish
Contact	Copper Alloy / Au Plating
Outer Contact	Zinc Alloy Die cast / Ni plating
Insulator	PTFE

※ Specifications may vary depending on the connector. Please check the specifications before use.

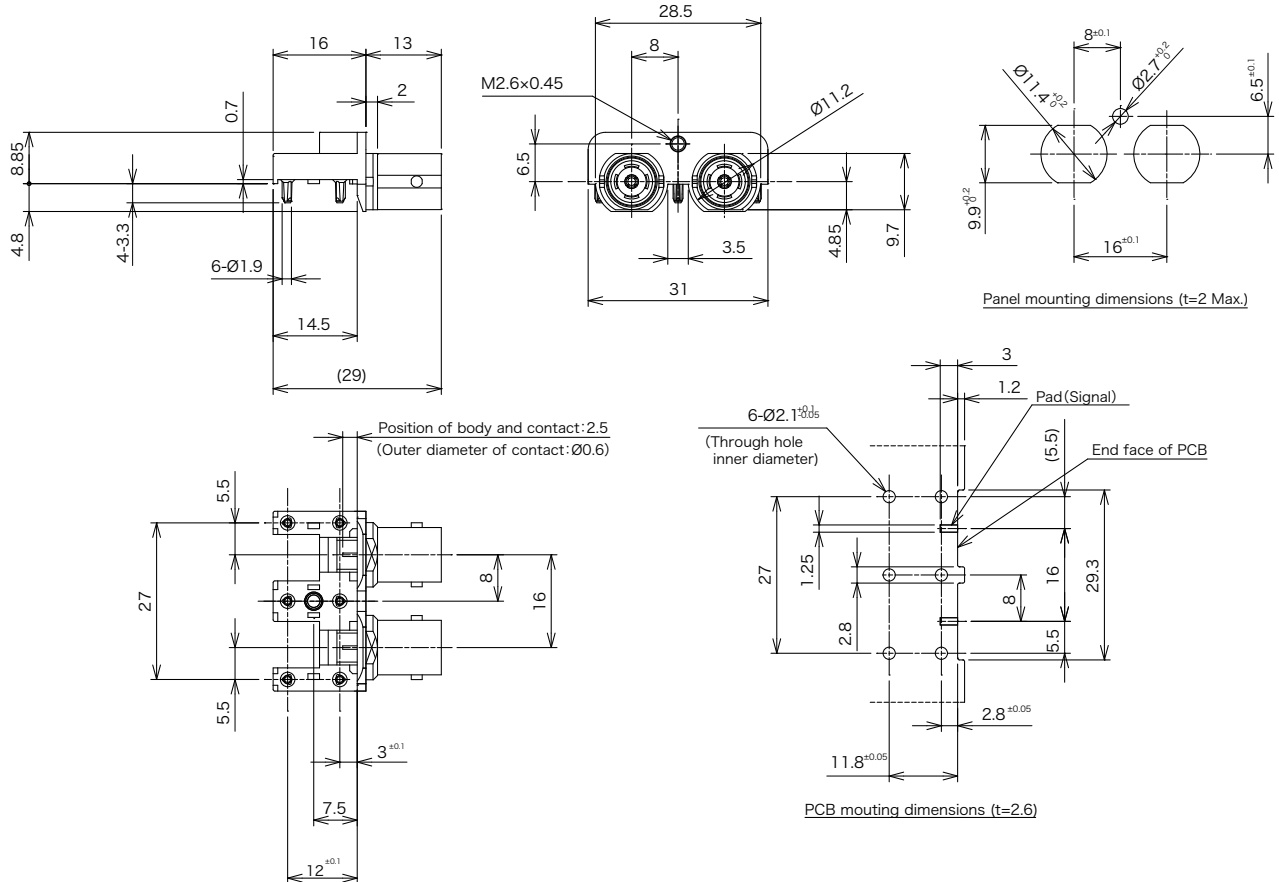
© Please acknowledge that the specification etc. of this catalog might change by the improvement etc. without notice. Moreover, the characteristic and the specification of the published product are the reference values. Please confirm the content with the latest delivery specifications when you use the product.

▶ Angle type for PCB (Automatic mounting)

■ BNC75-LR1-PCE (Single)



■ BNC75-2LR1-PCE (Double)



© Please acknowledge that the specification etc. of this catalog might change by the improvement etc. without notice.  
 Moreover, the characteristic and the specification of the published product are the reference values.  
 Please confirm the content with the latest delivery specifications when you use the product.

## ▶ Angle type for PCB (Manual mounting)



## OUTLINE

- ◆ High performance connector of angle type for PCB.
- ◆ Various variations are possible, because it is produced by machining.

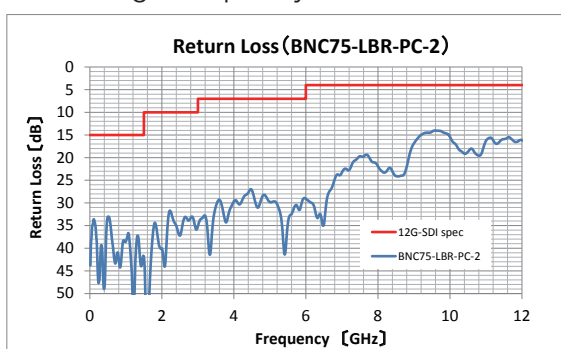
## APPLICATIONS

Broadcast equipment (Switcher, Professional video camera, Monitor)

## FEATURES

- ◆ Excellent high-frequency characteristics (12G-SDI compliant)
- ◆ Lineup of middle mount type and edge mount type (bulkhead)

【High-frequency characteristic】



## SPECIFICATIONS

Characteristic Impedance	75 Ω
Frequency Range	12GHz Max.
Rated Voltage	AC500V(r.m.s.)
Dielectric Withstanding Voltage	AC1,000V(r.m.s.) / 1 minute
Insulation Resistance	1,000M Ω Min. at 500V DC
Return Loss	20dB Min.( ~ 3GHz)
	10dB Min.( ~ 12GHz)
Operating Temperature	-40 ~ +85°C

## Material / Finish

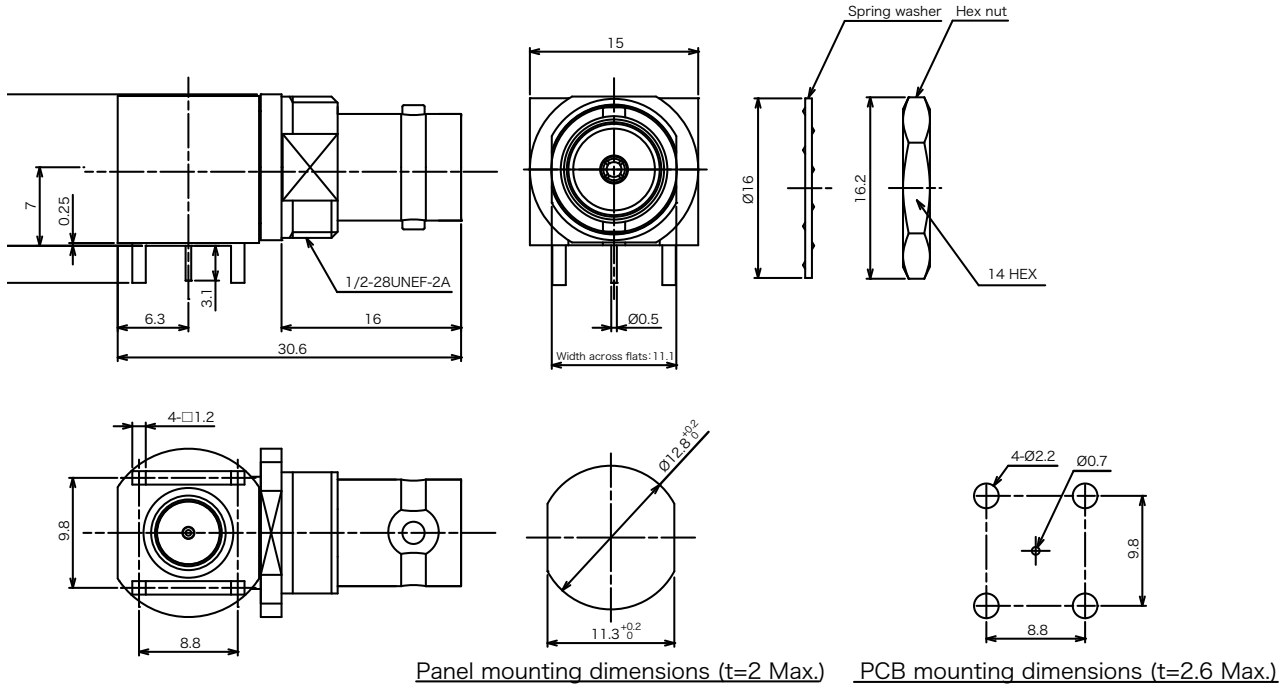
Item	Material / Finish
Contact	Copper Alloy / Au Plating
Outer Contact	Copper Alloy / Ni plating
Insulator	PTFE

※ Specifications may vary depending on the connector. Please check the specifications before use.

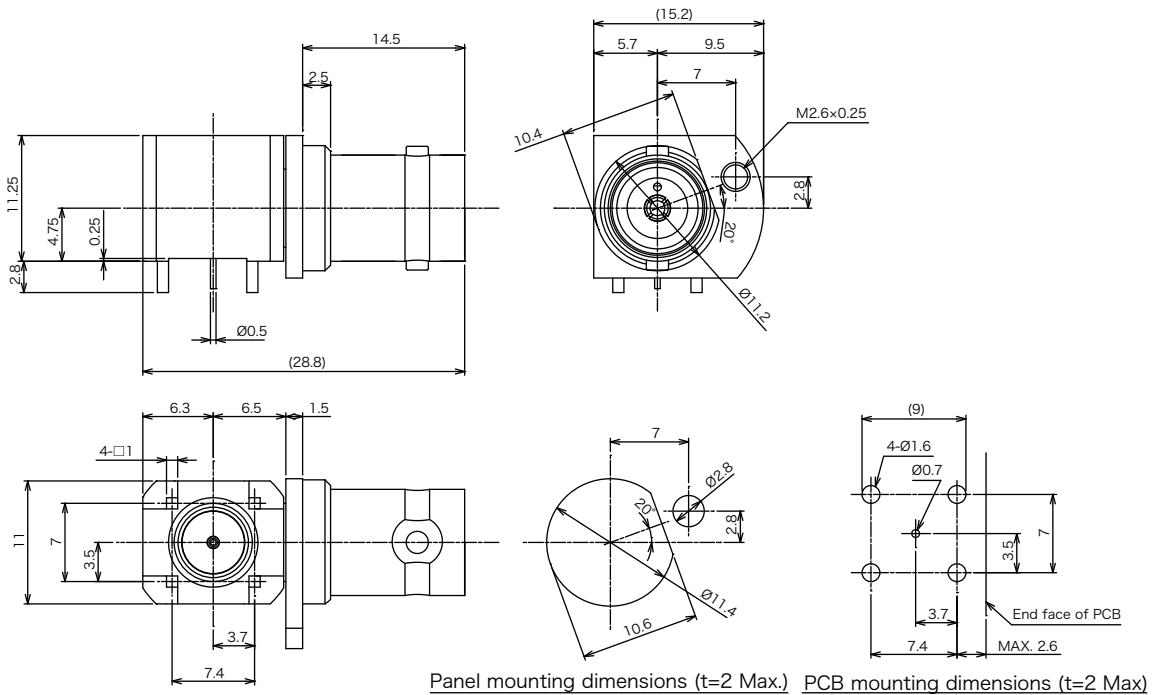
© Please acknowledge that the specification etc. of this catalog might change by the improvement etc. without notice.  
Moreover, the characteristic and the specification of the published product are the reference values.  
Please confirm the content with the latest delivery specifications when you use the product.

▶ Angle type for PCB (Manual mounting)

■ BNC75-LBR-PC-2 (Middle mount type)



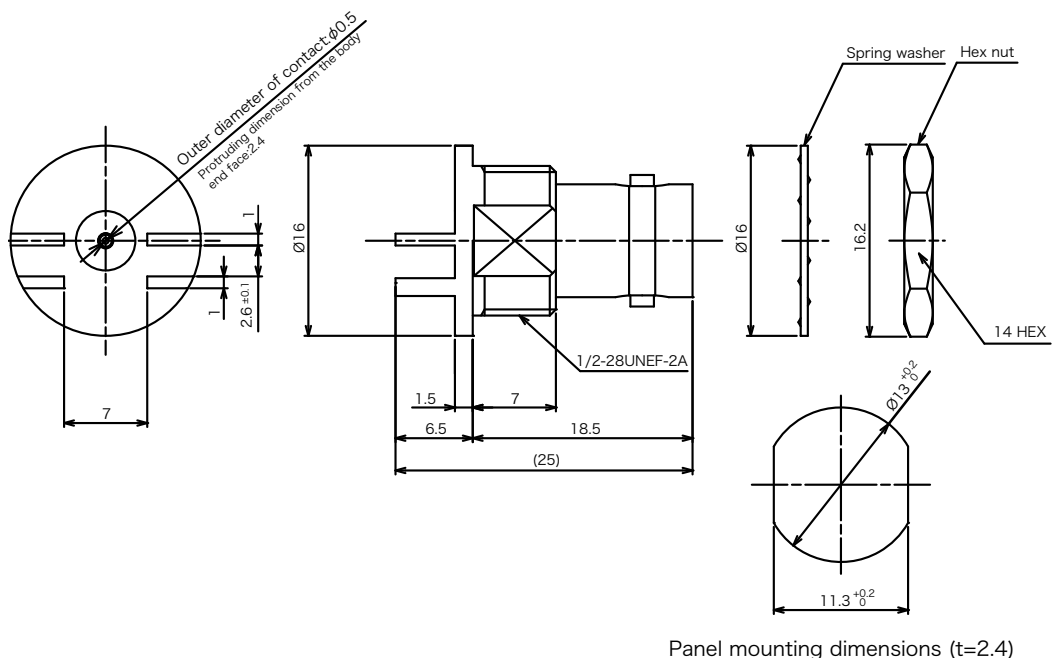
■ BNC75-LR1-PC (Middle mount type)



© Please acknowledge that the specification etc. of this catalog might change by the improvement etc. without notice.  
 Moreover, the characteristic and the specification of the published product are the reference values.  
 Please confirm the content with the latest delivery specifications when you use the product.

▶ Angle type for PCB (Manual mounting)

■ BNC75-BR-PCE (Edge mount type)



© Please acknowledge that the specification etc. of this catalog might change by the improvement etc. without notice.  
 Moreover, the characteristic and the specification of the published product are the reference values.  
 Please confirm the content with the latest delivery specifications when you use the product.

## ▶ Straight type for PCB (Manual mounting)



### OUTLINE

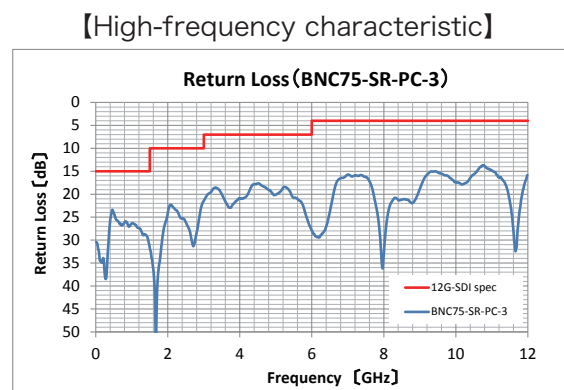
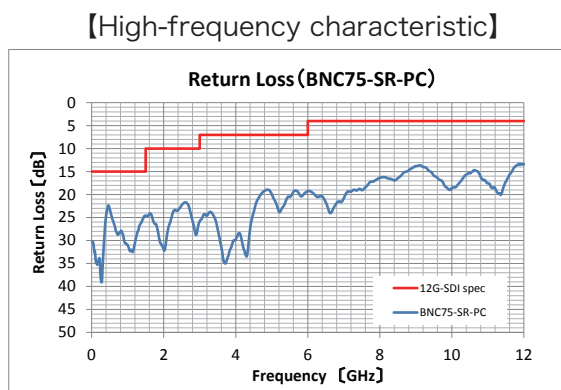
- ◆ High performance connector of straight type for PCB.
- ◆ Various variations are possible, because it is produced by machining.

### APPLICATIONS

Broadcast equipment (Switcher, Professional video camera, Monitor)

### FEATURES

- ◆ Excellent high-frequency characteristics (12G-SDI compliant)



### SPECIFICATIONS

Characteristic Impedance	75 Ω
Frequency Range	12GHz Max.
Rated Voltage	AC500V(r.m.s.)
Dielectric Withstanding Voltage	AC1,000V(r.m.s.) / 1 minute
Insulation Resistance	1,000M Ω Min. at 500V DC
Return Loss	20dB Min.( ~ 3GHz)
	10dB Min.( ~ 12GHz)
Operating Temperature	-40 ~ +85°C

### Material / Finish

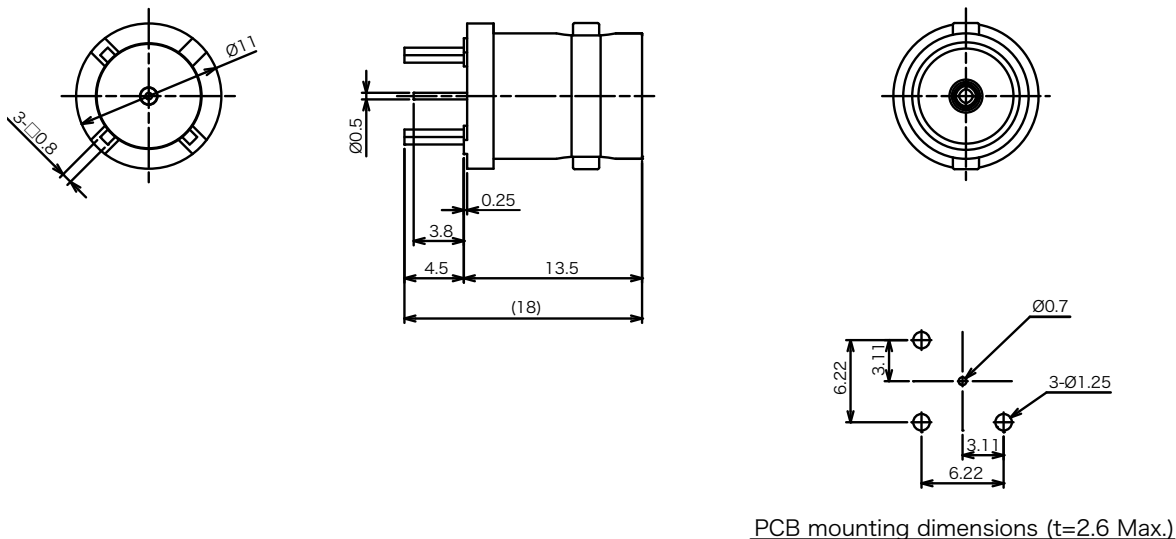
Item	Material / Finish
Contact	Copper Alloy / Au Plating
Outer Contact	Copper Alloy / Ni plating
Insulator	PTFE

※ Specifications may vary depending on the connector. Please check the specifications before use.

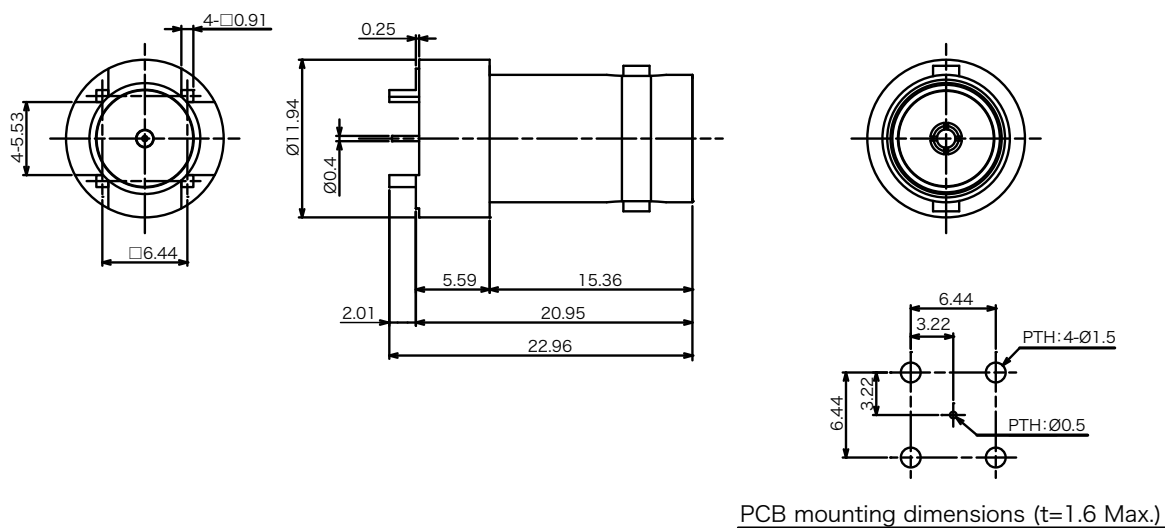
© Please acknowledge that the specification etc. of this catalog might change by the improvement etc. without notice.  
 Moreover, the characteristic and the specification of the published product are the reference values.  
 Please confirm the content with the latest delivery specifications when you use the product.

▶ Straight type for PCB (Manual mounting)

■ BNC75-SR-PC (Outer contact: 3 pins)



■ BNC75-SR-PC-3 (Outer contact: 4 pins)



© Please acknowledge that the specification etc. of this catalog might change by the improvement etc. without notice.  
 Moreover, the characteristic and the specification of the published product are the reference values.  
 Please confirm the content with the latest delivery specifications when you use the product.